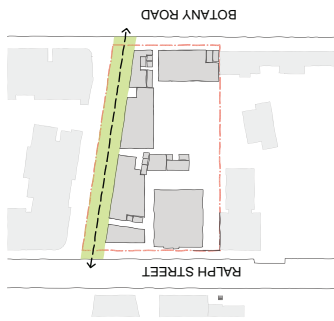


# **Attachment G**

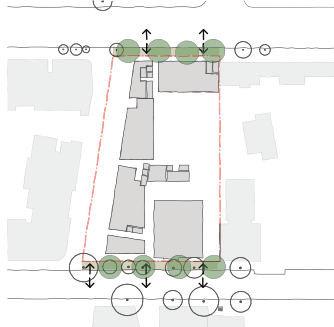
## **Landscape Concept Plan**

# DESIGN PRINCIPLES



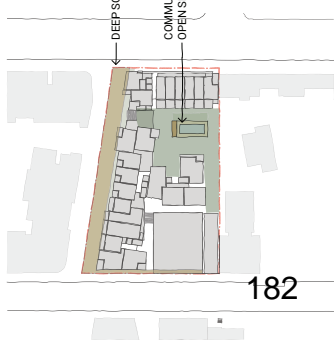
## THROUGH SITE LINK

The through site link provides opportunity for a well-connected communal space that promotes pedestrian and cycle use with activity and interaction around the proposed commercial suites and retail spaces. The design also provides a good opportunity to incorporate public art.



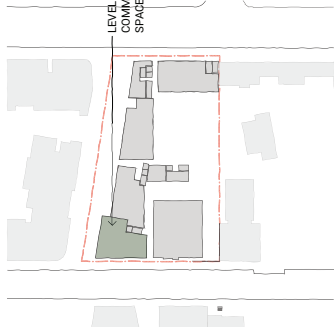
## ACTIVE STREET FRONTAGE, MAINTAIN STREET TREES + INFRASTRUCTURE

Maintain and enhance existing tree canopies, including building setbacks, wide pavements and street tree planting (Robina pseudotsugata 7500mm). Design proposals to be in accordance with Council's Public Domain Strategy.



## COMMUNAL OPEN SPACE + DEEP SOIL

Opportunity exists for communal open space that connects with the through site link. The design of the courtyard should include areas for active and passive recreation allowing for a range of uses. The design should accommodate clear distinction between private and communal spaces. The design should also consider the production of native tree species, responding to the sites microclimate. Landscaping treatments in accordance with NSW Department of Planning Apartment Design Guidelines.



## ROOF TOP COMMUNAL OPEN SPACE

Potential opportunity for communal open space on the rooftop allowing for passive and active social recreational uses. The design should accommodate clear distinction between private and communal spaces. The design should also consider the production of native tree species, responding to the sites microclimate. Landscaping treatments in accordance with NSW Department of Planning Apartment Design Guidelines.

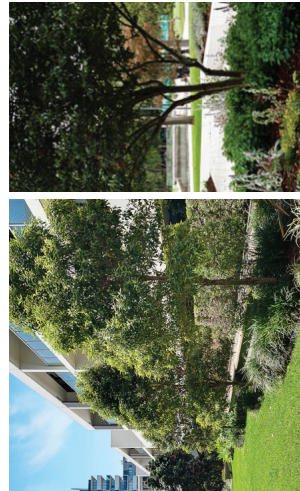
Soil depths to be noted as being in accordance with the NSW Planning Apartment Design Guidelines.

- Groundcover - 300-450mm
- Shrubs - 500 - 600mm
- Small Trees - 800mm
- Medium Trees - 1000mm
- Large Trees - 1200mm
- Turf - 200mm

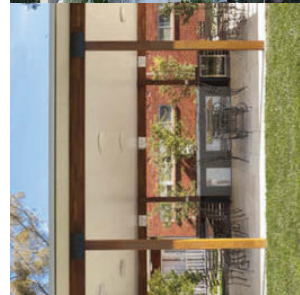
# DESIGN ELEMENTS



ACTIVE THROUGH SITE LINK



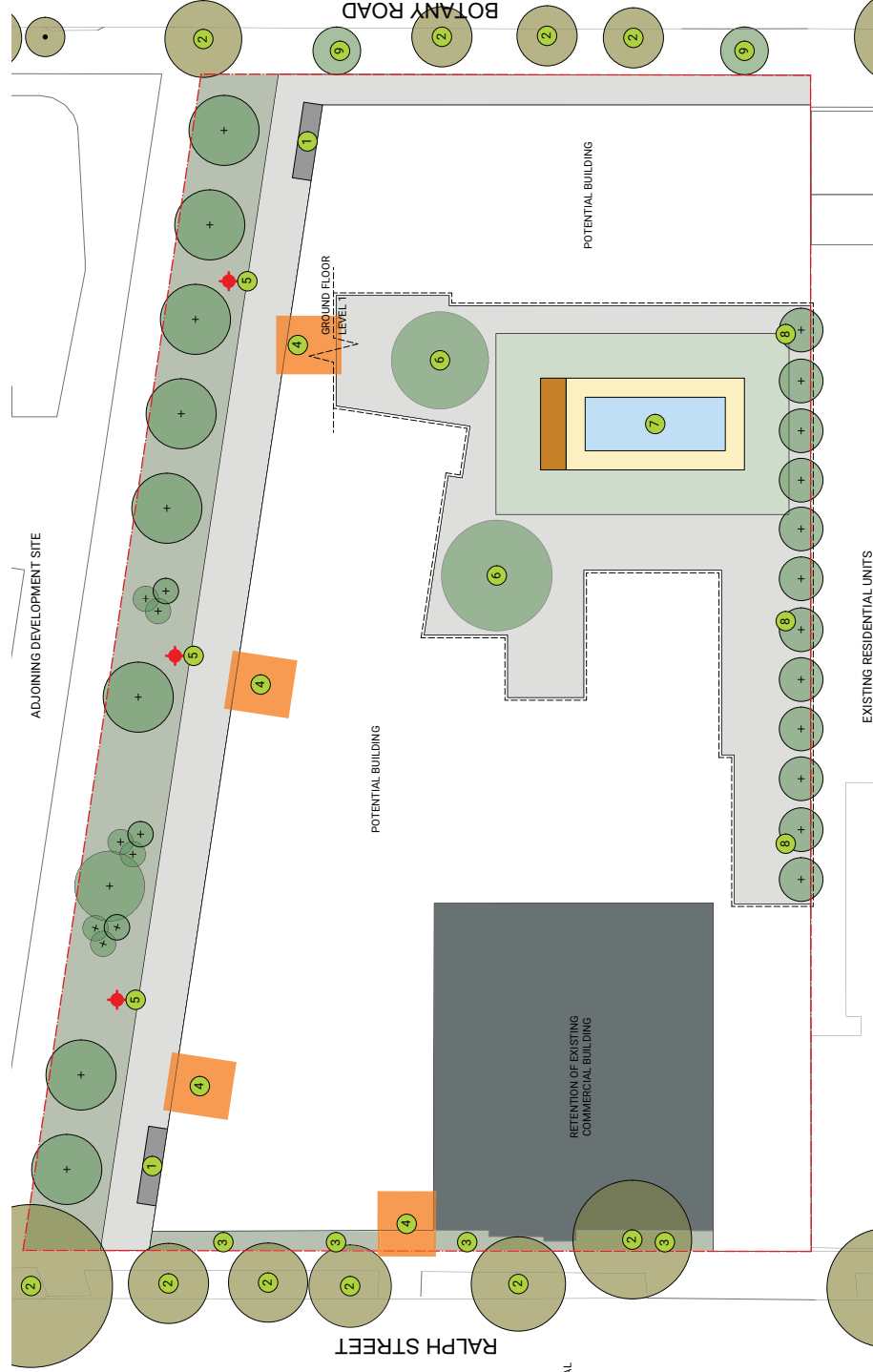
TREE PLANTING



LANDSCAPE FORM + TEXTURE



EXISTING RESIDENTIAL UNITS



## LEGEND

- 1 CONSIDER BIKE PARKING AT ENTRY TO THROUGH SITE LINK
- 2 PROTECT AND RETAIN EXISTING STREET TREES
- 3 OPPORTUNITY FOR DEEP SOIL PLANTING
- 4 WELL DEFINED OPEN AND SAFE BUILDING ENTRY POINTS
- 5 PUBLIC ART OPPORTUNITIES IN THROUGH SITE LINK
- 6 OPPORTUNITY FOR PASSIVE OPEN SPACE AREAS
- 7 OPPORTUNITY FOR ACTIVE RECREATION USE (IE. POOL, LAWN AND BBQ)
- 8 SCREEN PLANTING TO BOUNDARY
- 9 STREETSCAPE TREATMENTS IN ACCORDANCE WITH COUNCILS DCP

